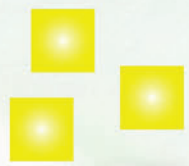


KENTURN

since 1983



CNC Grinding SPINDLES





Kenturn 健椿軌跡

History

- 1983年 成立於彰化縣和美鎮・生產量測設備與研磨主軸
Established in Homei, Changhua, and produced grinding spindles and surveying instruments
- 1985年 生產內藏高頻馬達主軸與 專用機主軸
Made built-in spindles and special purposed spindles
- 1988年 生產鏡面加工機主軸與特殊精密治具
Made special jigs and spindles for mirrors
- 1990年 生產CNC綜合加工機主軸・生產CNC車床主軸・
生產CNC內藏式馬達主軸
Made spindles for CNC machines, Lathes, and also made built-in milling spindles
- 1994年 生產水車專用主軸與工作站定位盤
Made spindles for rotary and made fixed plate
- 1997年 生產微鑽頭加工主軸與治具
Made PCB spindles and jigs
- 2000年 研發TFT生產設備零組件及各種主軸標準化
Made the spindles standardized, and made parts for TFT instruments
- 2003年 研發計畫生產切削刀具
Started to design cutting tools
- 2005年 彰濱廠廠房6600 m²(2,000坪)落成啟用
研發高速台車驅動組合與機器人驅動組合
Moved to Chang-bin new factory and designed high-speed automation system
- 2006年 臥搪銑主軸與BT60銑床主軸開發
Made Horizontal boring spindle & BT60 milling spindle
- 2008年 內藏式雙面磨刀主軸開發・通過ISO 9001品質管理認證
Made two side built-in cutting tool grinding spindle and got ISO 9001 quality management certification
- 2009年 內藏式車床主軸開發・齒輪箱開發
Made built-in lathe spindle and gear box
- 2010年 廠房擴建3300 m²(1,000坪)
Expansion factory 3300m²
- 2011年 BIG PLUS簽約授權認可廠商
BIG PLUS authorized
- 2012年 二廠動土興建(土地面積50,000m²)
Construction of 2nd factory , 50000m²
- 2014年 通過CE認證・通過ISO 14001環境管理系統認證
通過OHSAS 18001職業安全與衛生管理認證
Got CE certification and ISO 14001 environmental management certification and OHSAS 18001 occupational health & safety management certification

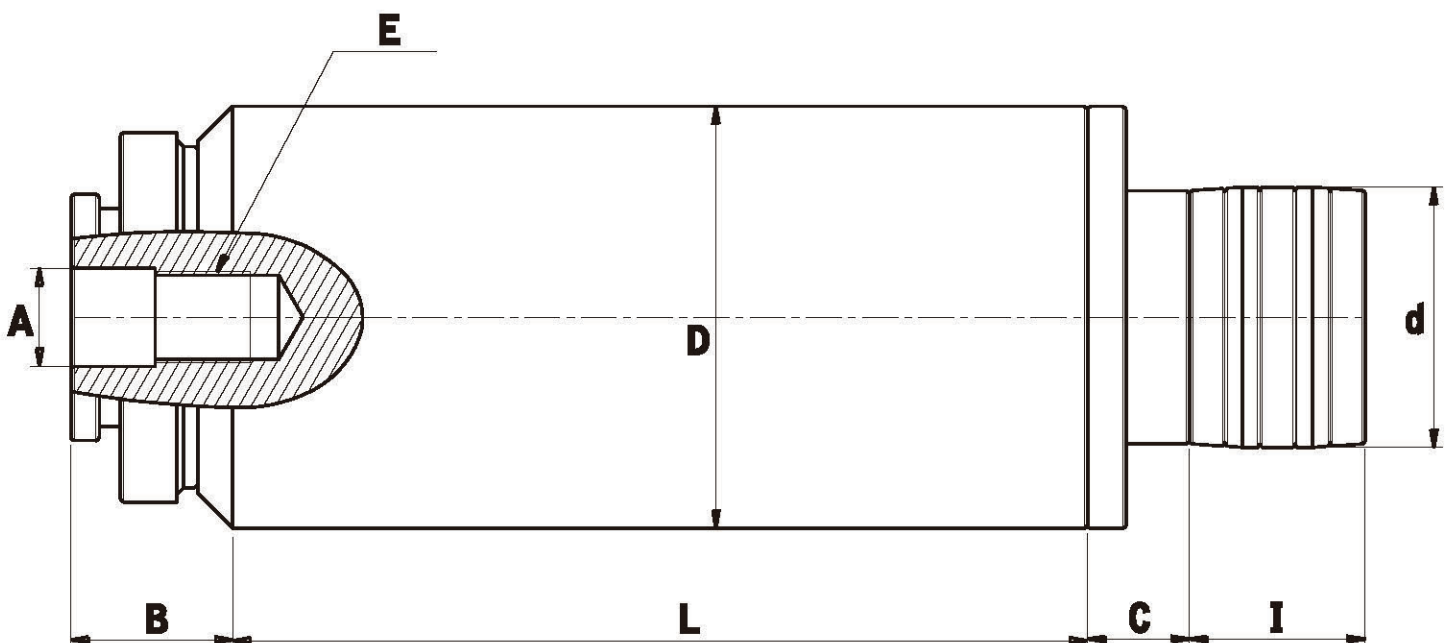


HSG

Belt Drive Spindles

Type	Max Speed (rpm)	Quill (mm)		Dimensions (mm)				Spindle Pulley (mm)	
		A	E	B	C	D	L	d	I
HSG650	50000	8.5	M8XP1.25R	53	17	60	163	18	36
HSG730C	30000	10.5	M10XP1.5R	31	27	70	158	25	38
HSG740A	40000	10.5	M10XP1.5R	30	29	76.2	211	25	33
HSG810	10000	17	M16XP1.5R	28	27	80	222	85	50
HSG920	20000	15	M14XP1.5R	19	24	90	230	43	45
HSG940	40000	8.5	M8XP1.25R	16.5	19	90	230	24	33
HSG0908	12000	28	M26XP2.0R	46	29	120	243	74	50

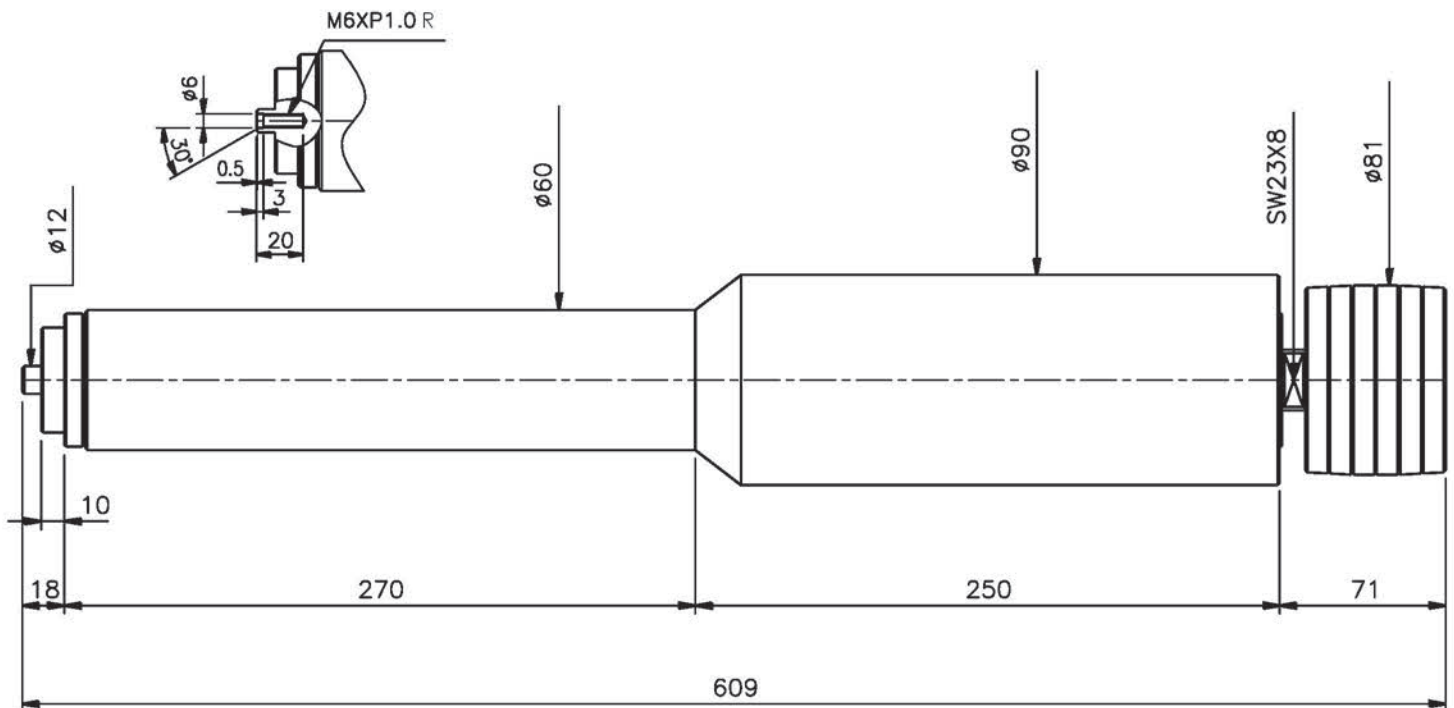
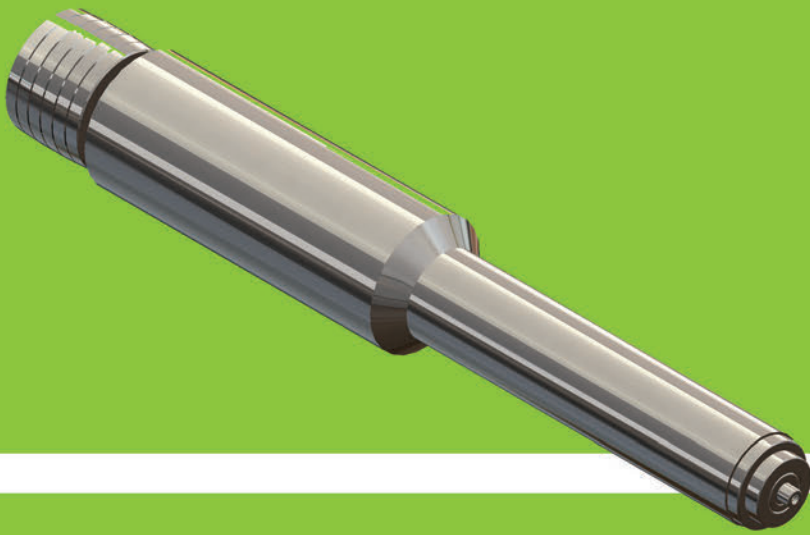
Balance Degree	Lubrication	Working Position
G0.4	Grease	Horizontal



PS9059

Belt Drive Spindles

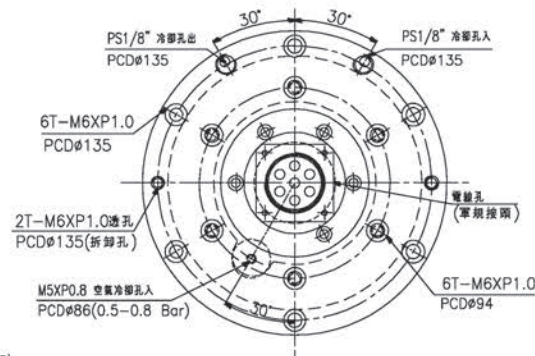
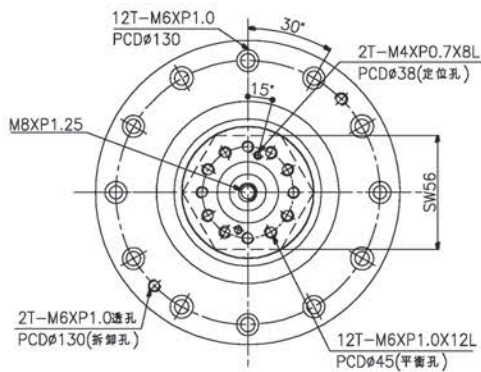
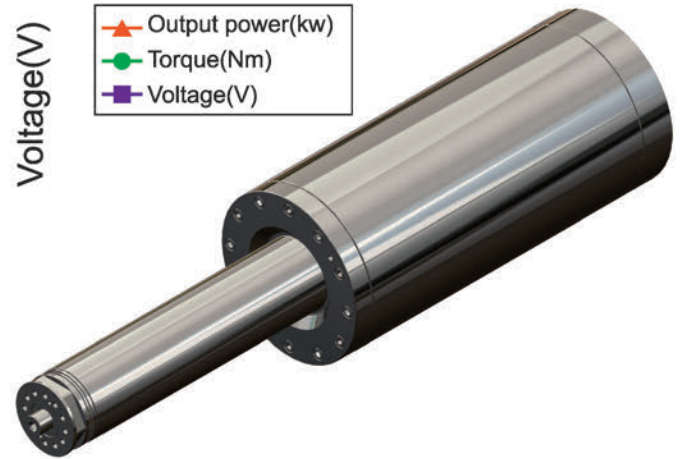
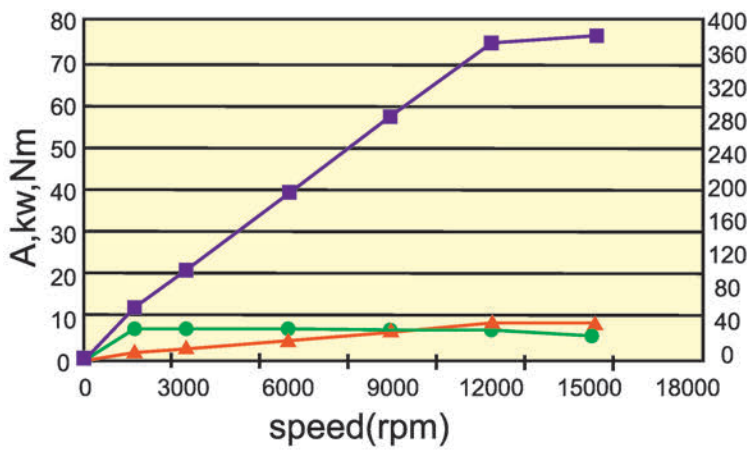
Body Outer Dia (mm)	Max Speed (rpm)	Balance Degree	Lubrication	Working Position
90	10000	G0.4	Grease	Horizontal



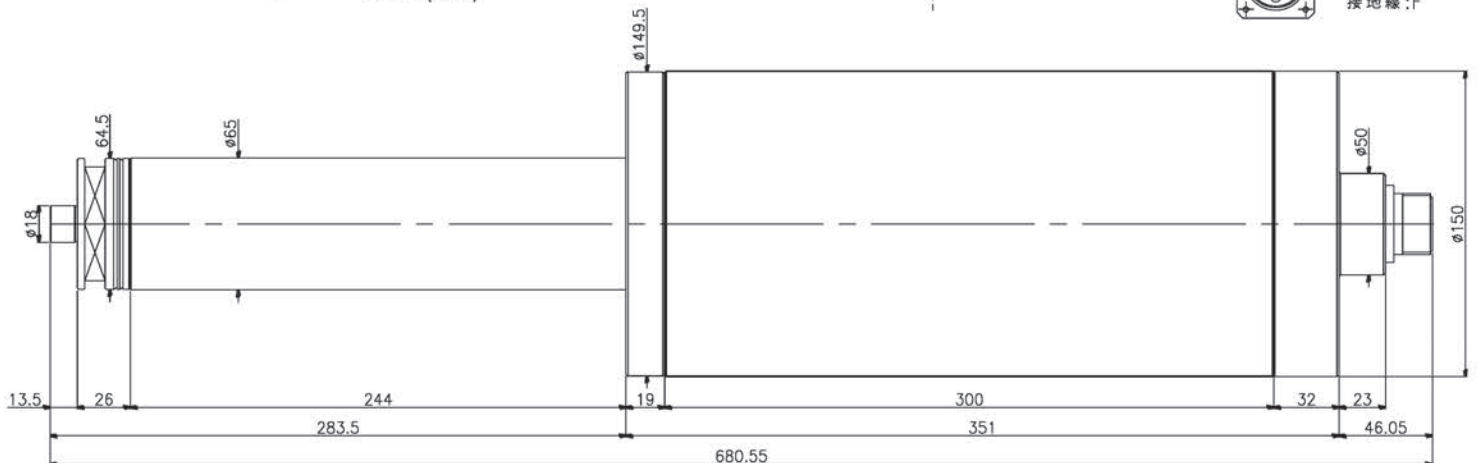
PSB0912

Built-in Motor Spindles

Body Outer Dia (mm)	Max Speed (rpm)	Balance Degree	Lubrication	Working Position	Output Power (kw)	Voltage (V)	Current (A)	Torque (Nm)
150	12000	G0.4	Grease	Horizontal	8.1	380	18.2	6.4



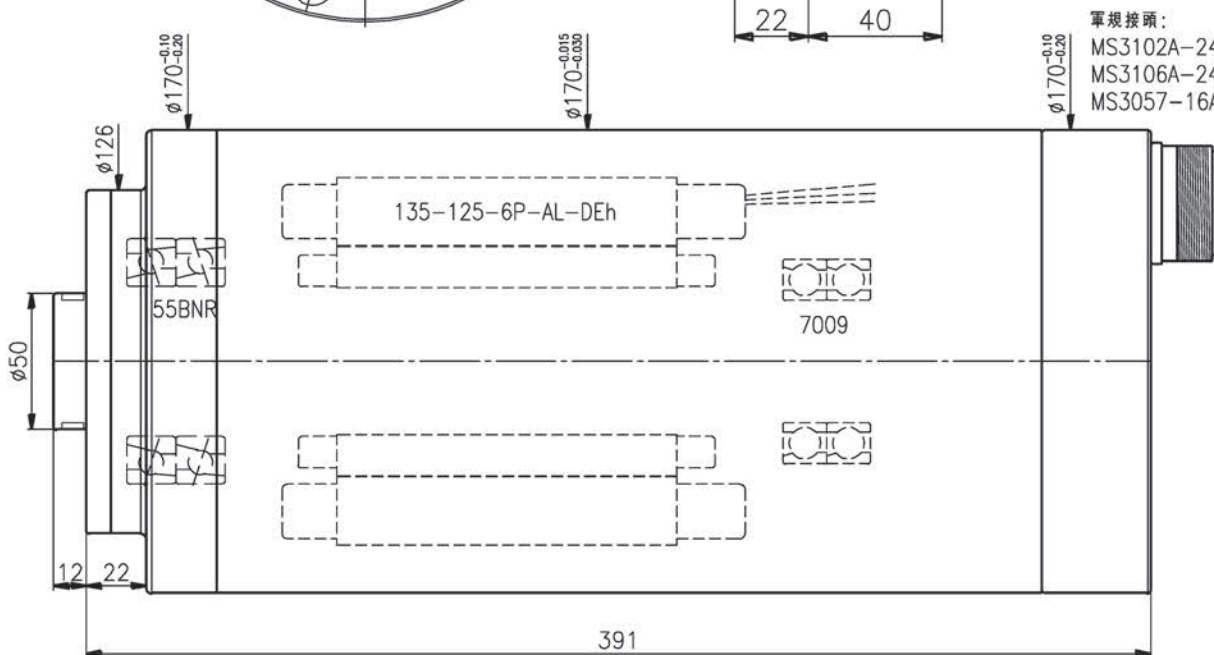
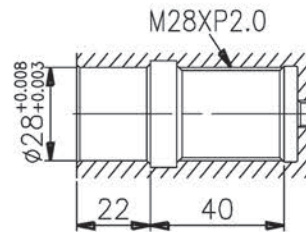
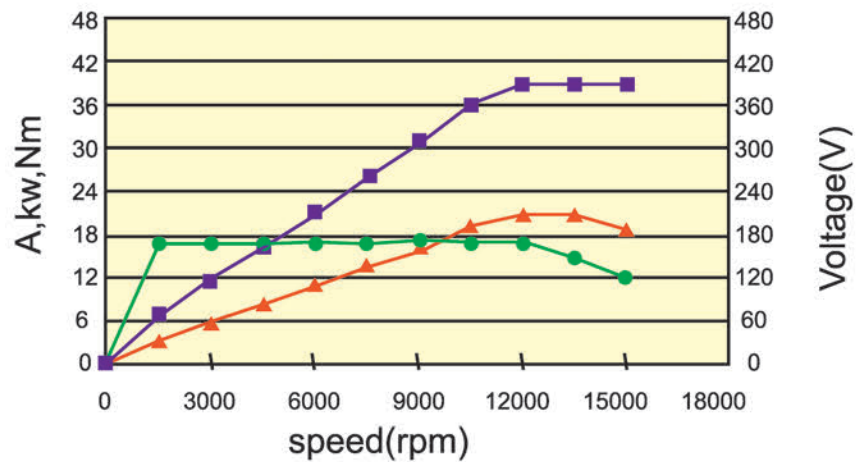
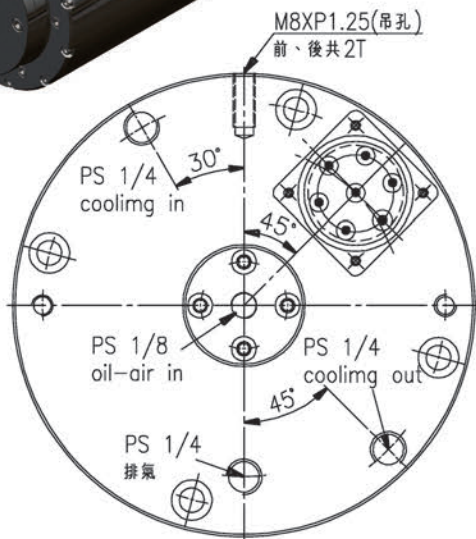
電源:A、B、C
溫度線:D、E
接地線:F



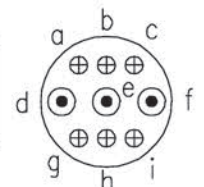
PSB1112

Built-in Motor Spindles

Body Outer Dia (mm)	Max Speed (rpm)	Balance Degree	Lubrication	Working Position	Output Power (kw)	Voltage (V)	Current (A)	Torque (Nm)
170	12000	G0.4	Grease	Horizontal	20	380	41.9	16



軍規接頭:
MS3102A-24-11
MS3106A-24-11
MS3057-16A

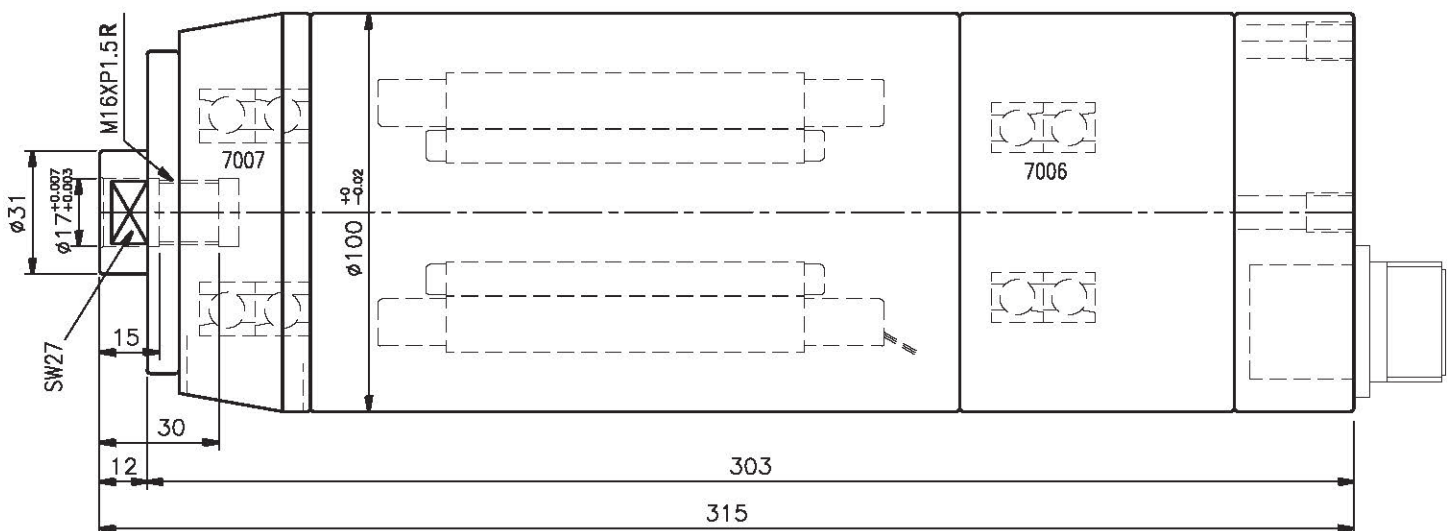
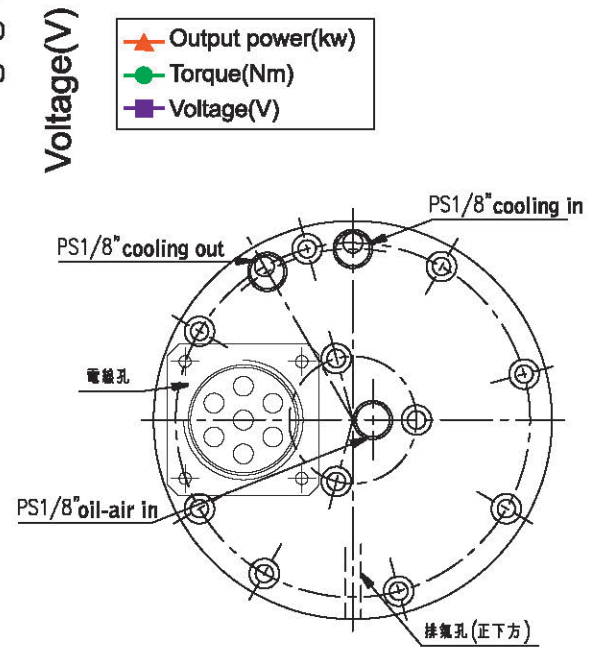
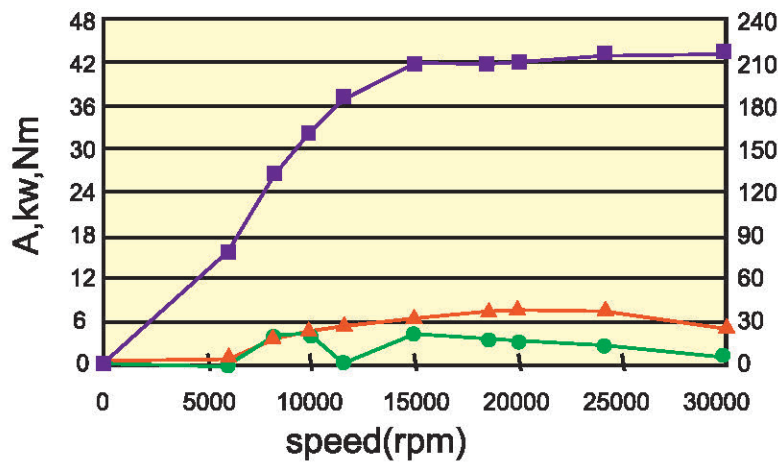


- a : PTC130
- b : KTY84-130
- c : 接地
- d : 電源 U
- e : 電源 V
- f : 電源 W
- g : 預備
- h : 預備
- i : 預備

GHB0815

Built-in Motor Spindles

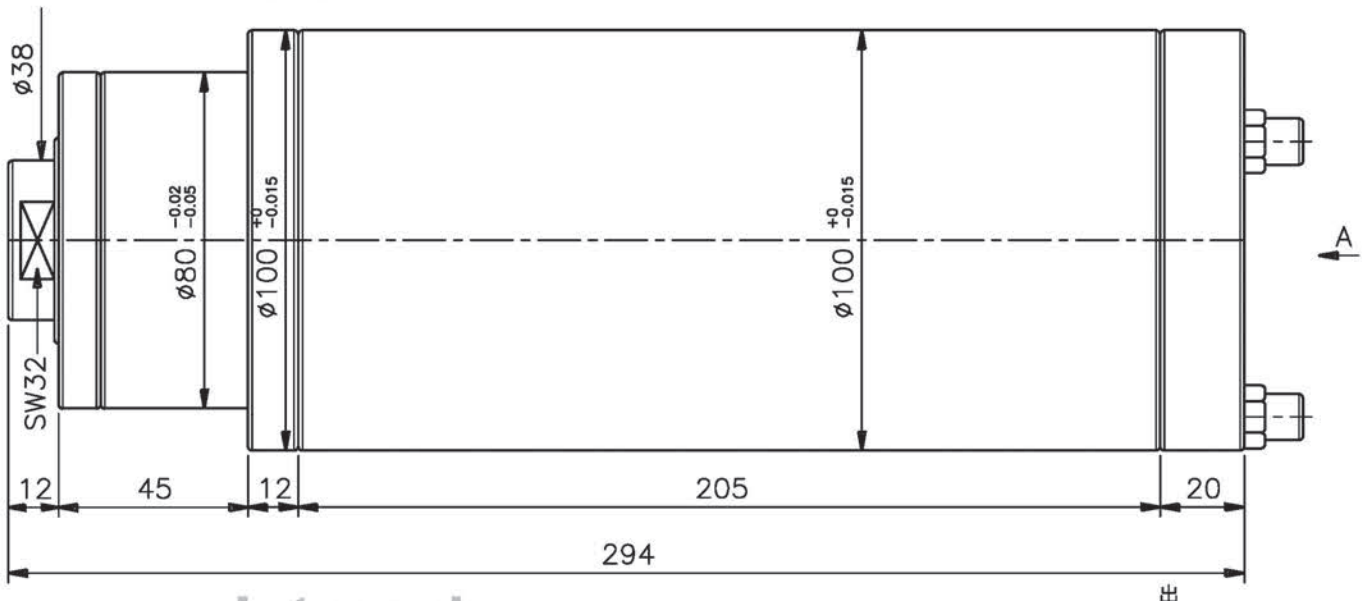
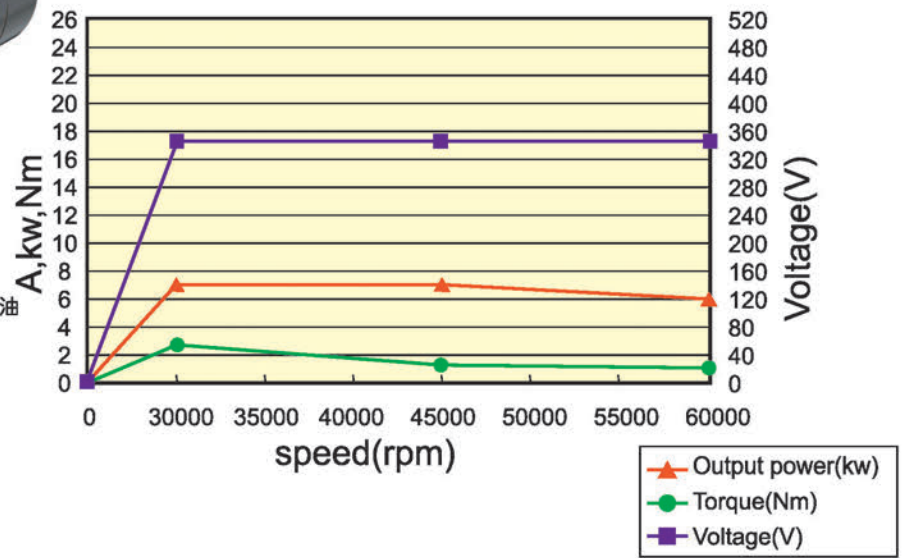
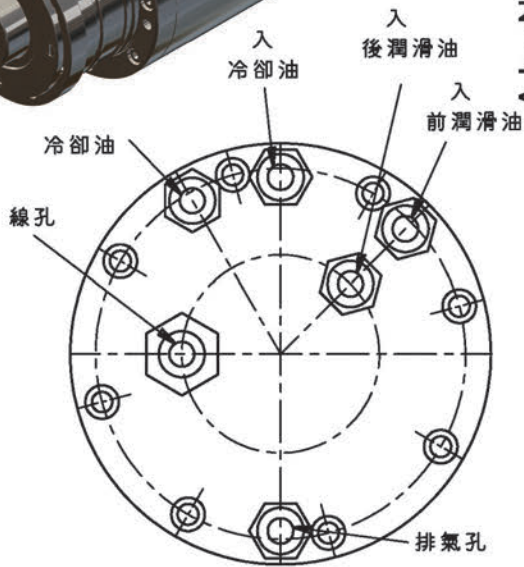
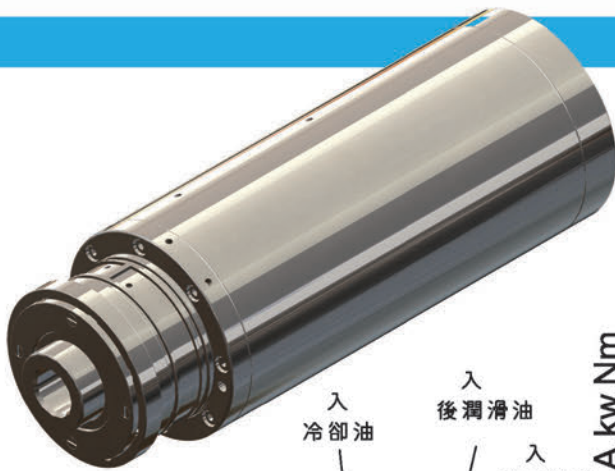
Body Outer Dia (mm)	Max Speed (rpm)	Balance Degree	Lubrication	Working Position	Output Power (kw)	Voltage (V)	Current (A)	Torque (Nm)
100	30000	G0.4	Oil-Air	Horizontal	7	220/380	24.8	4.3



HP0845

Built-in Motor Spindles

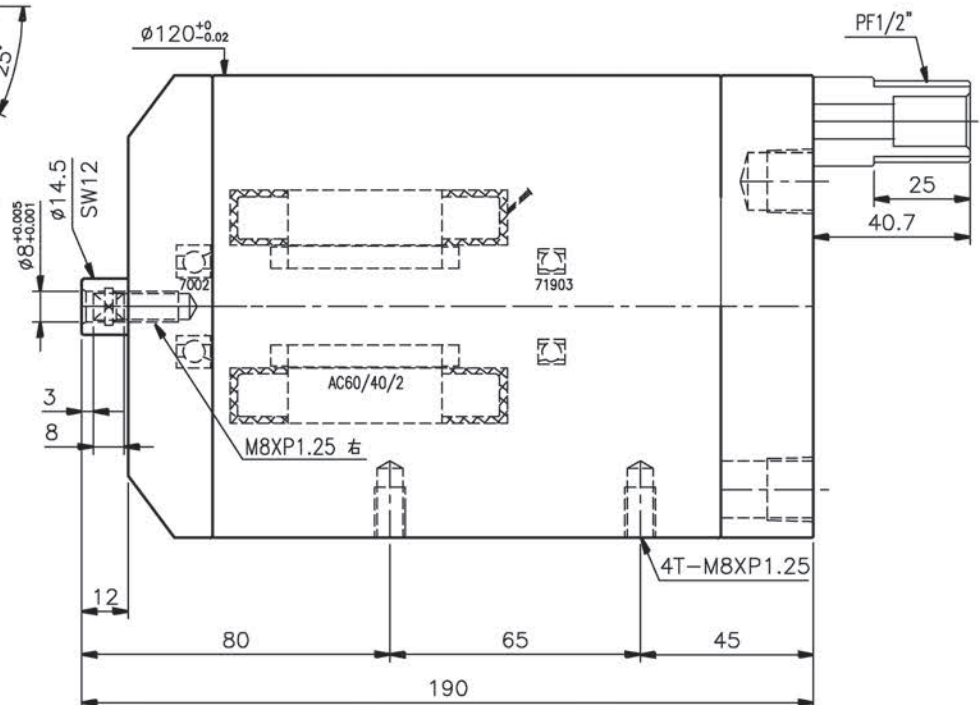
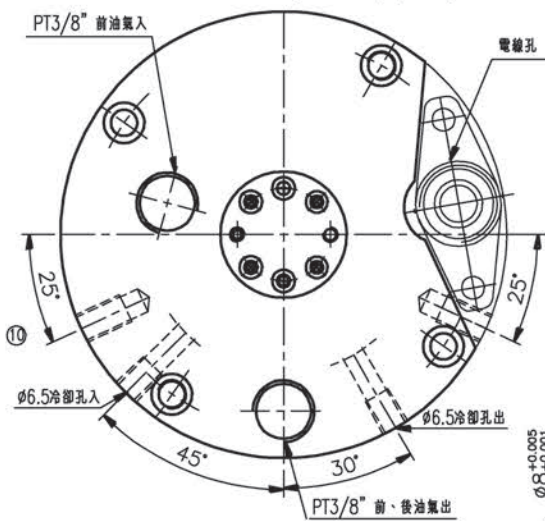
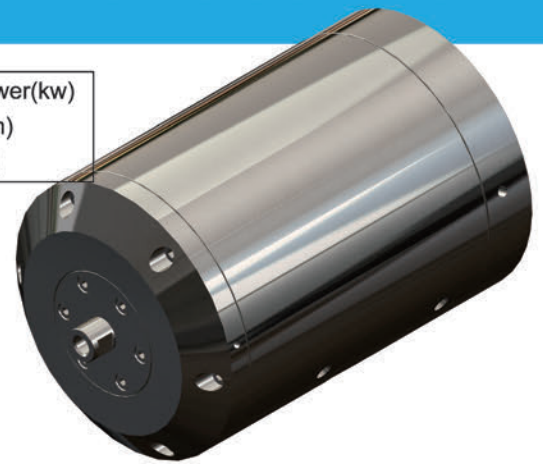
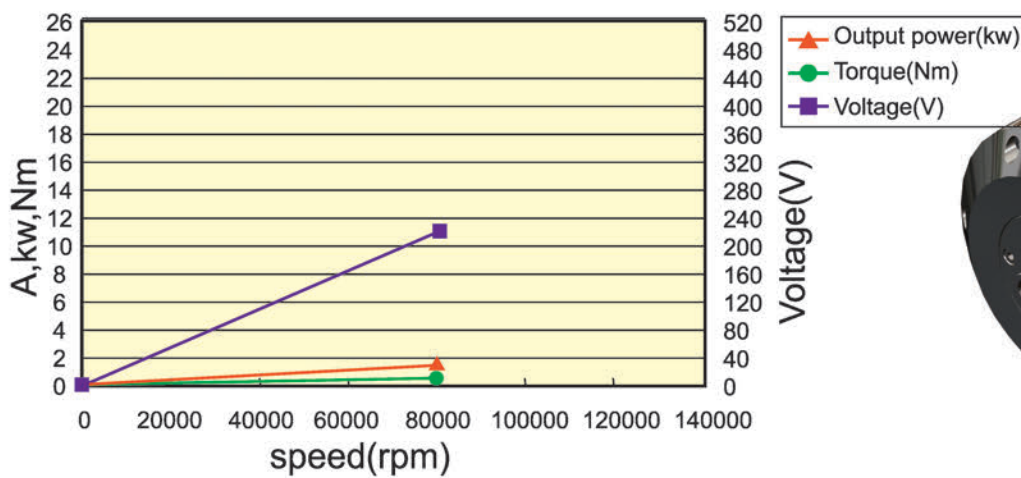
Body Outer Dia (mm)	Max Speed (rpm)	Balance Degree	Lubrication	Working Position	Output Power (kw)	Voltage (V)	Current (A)	Torque (Nm)
100	45000	G0.4	Oil-Air	Vertical	7.5	350	24	1.6



GHB0280

Built-in Motor Spindles

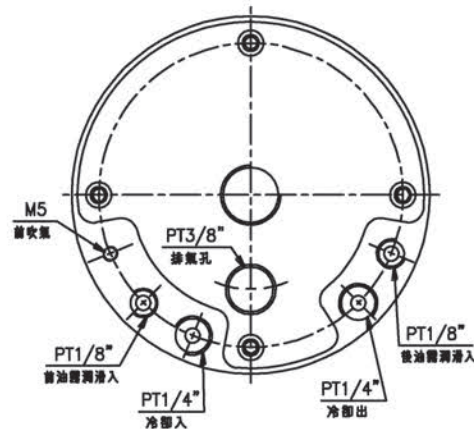
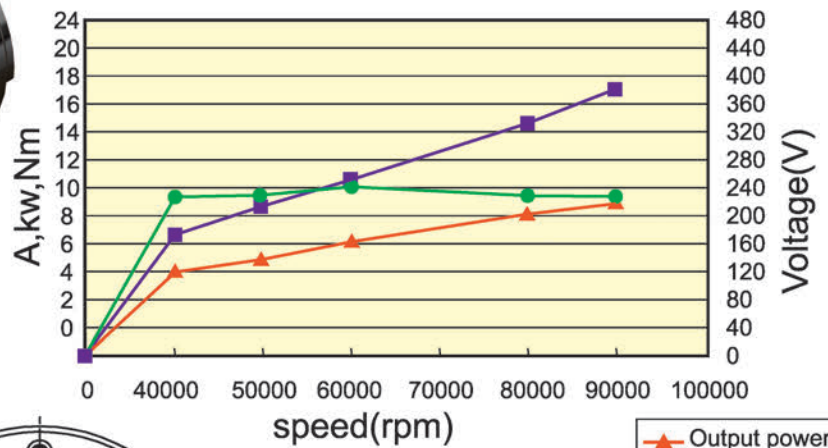
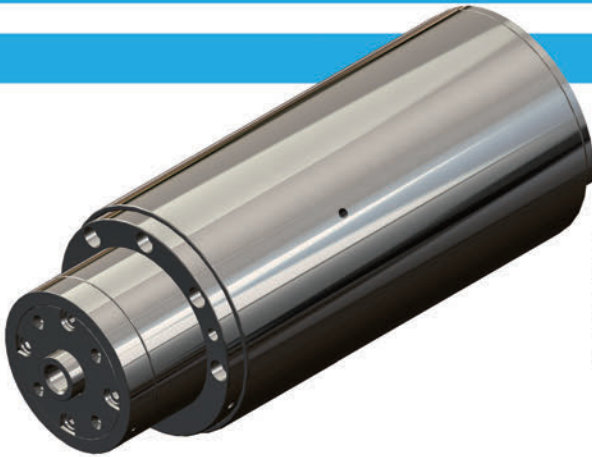
Body Outer Dia (mm)	Max Speed (rpm)	Balance Degree	Lubrication	Working Position	Output Power (kw)	Voltage (V)	Current (A)	Torque (Nm)
120	80000	G0.4	Oil-Air	Horizontal	1.8	220	7	0.2



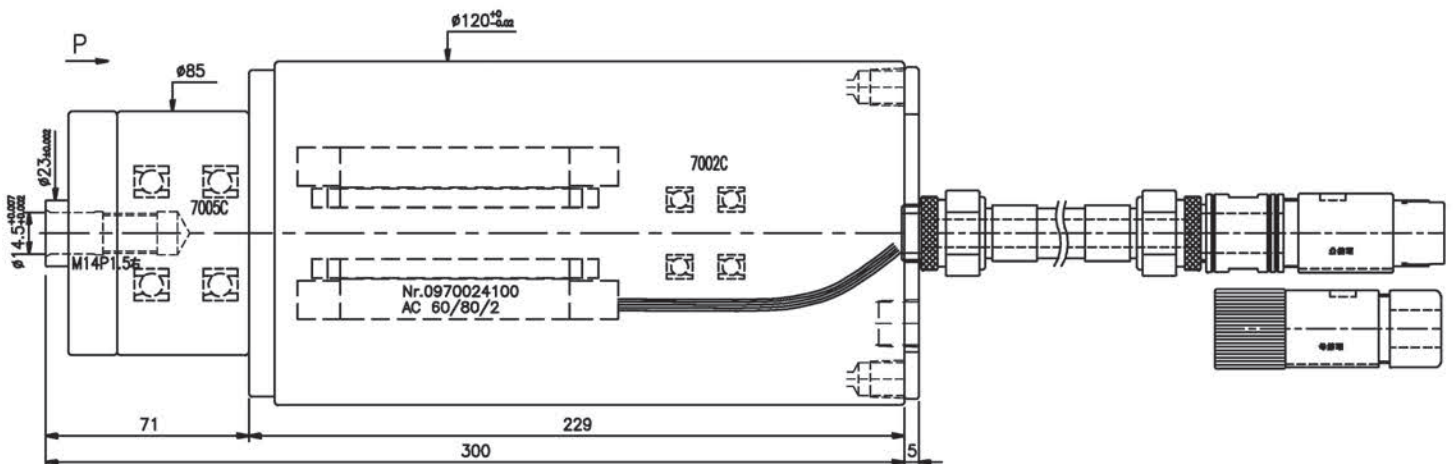
GHB0560

Built-in Motor Spindles

Body Outer Dia (mm)	Max Speed (rpm)	Balance Degree	Lubrication	Working Position	Output Power (kw)	Voltage (V)	Current (A)	Torque (Nm)
120	60000	G0.4	Oil-Air	Horizontal Vertical	6.2	253	17	1



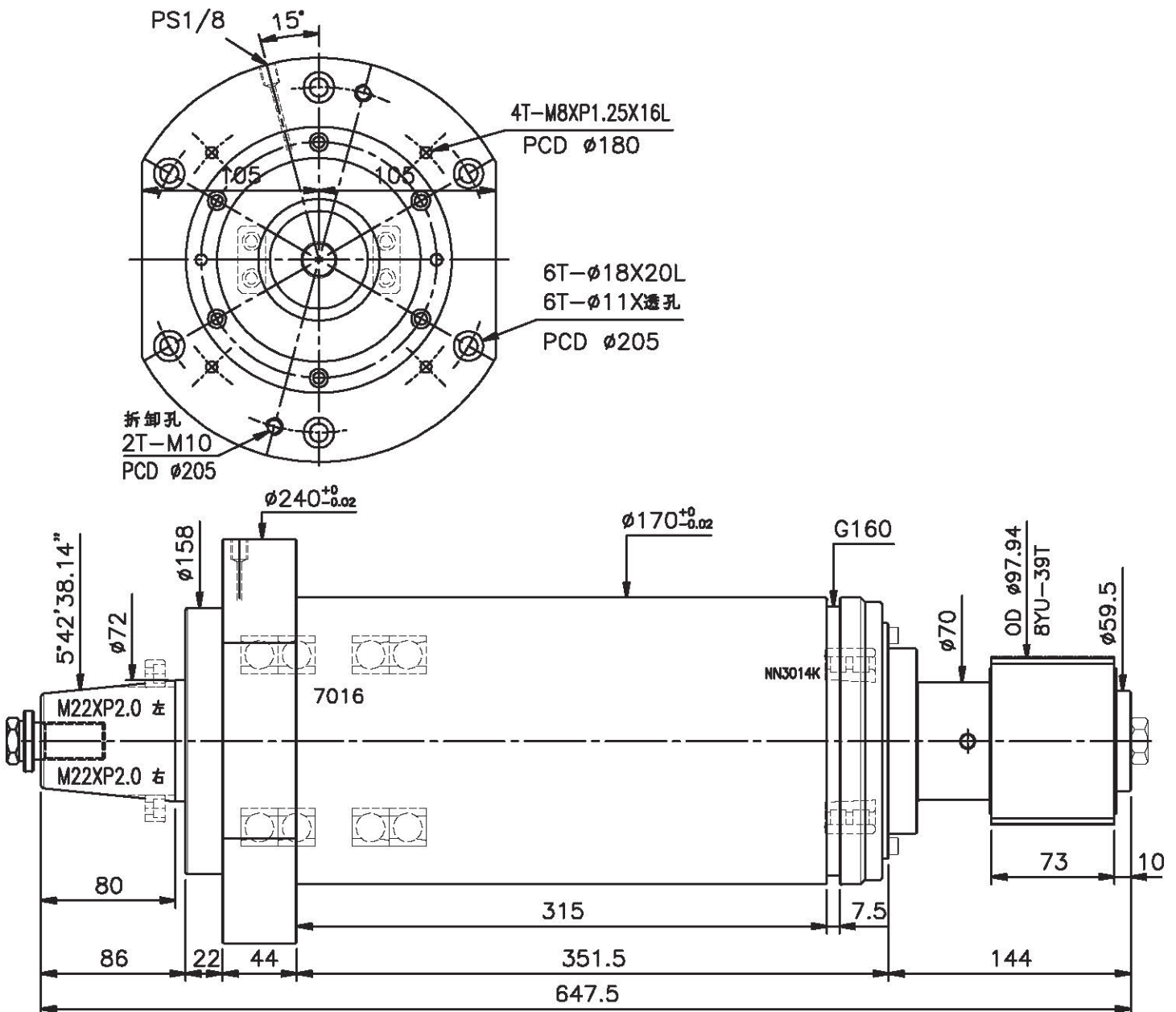
旋轉方向:CCW



HP1602A

Belt Drive Spindles

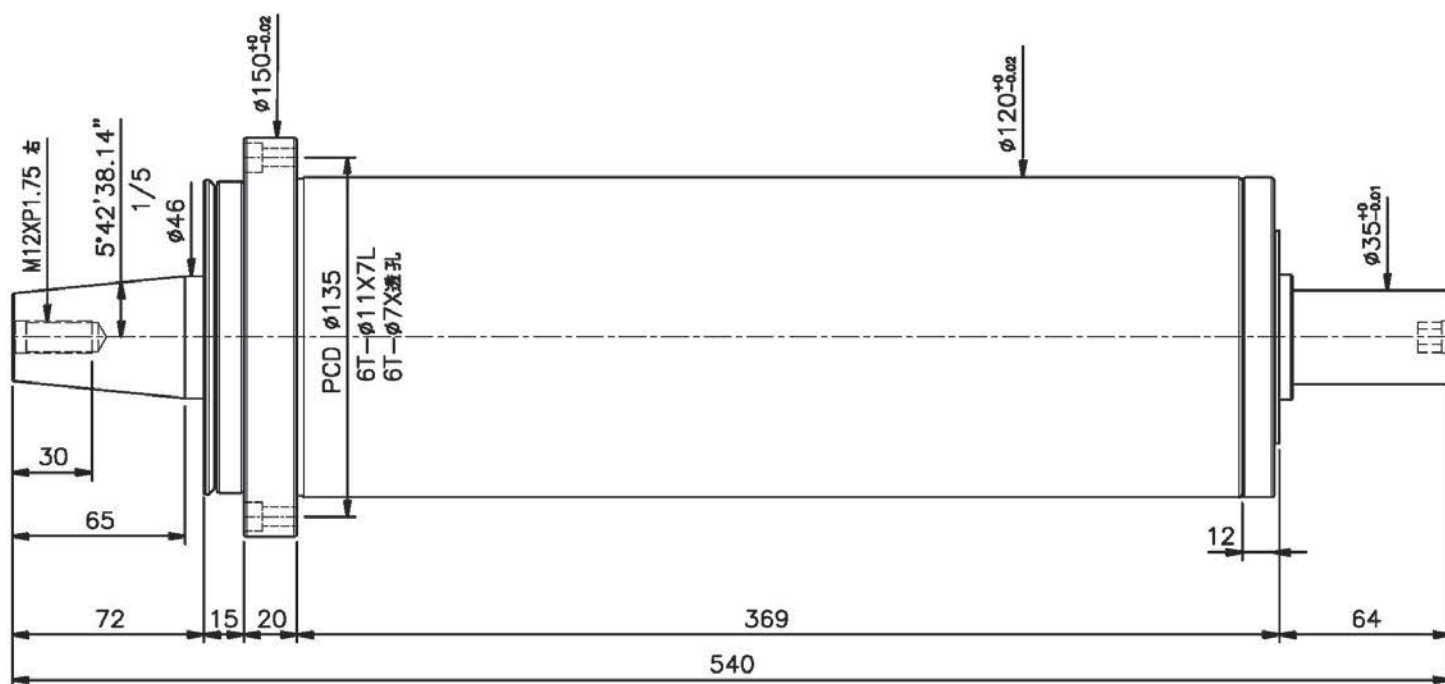
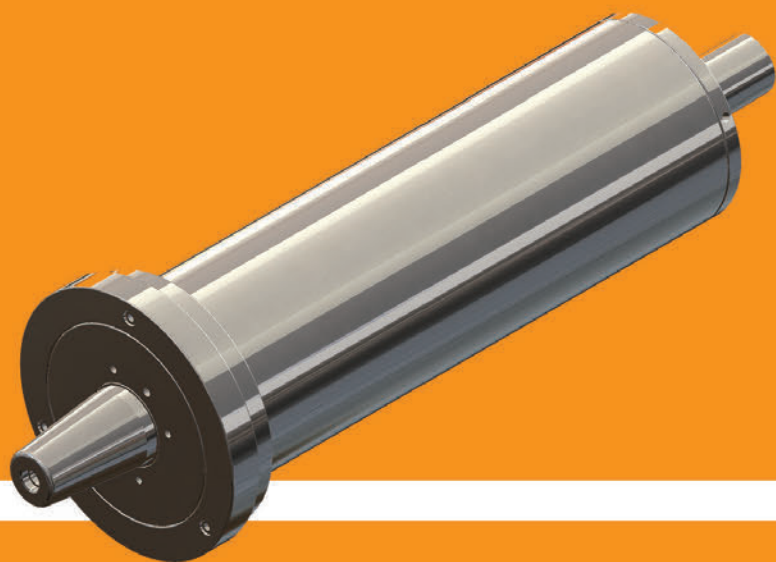
Body Outer Dia (mm)	Max Speed (rpm)	Balance Degree	Lubrication	Working Position
170	3600	G0.4	Grease	Vertical



GV1002R

Belt Drive Spindles

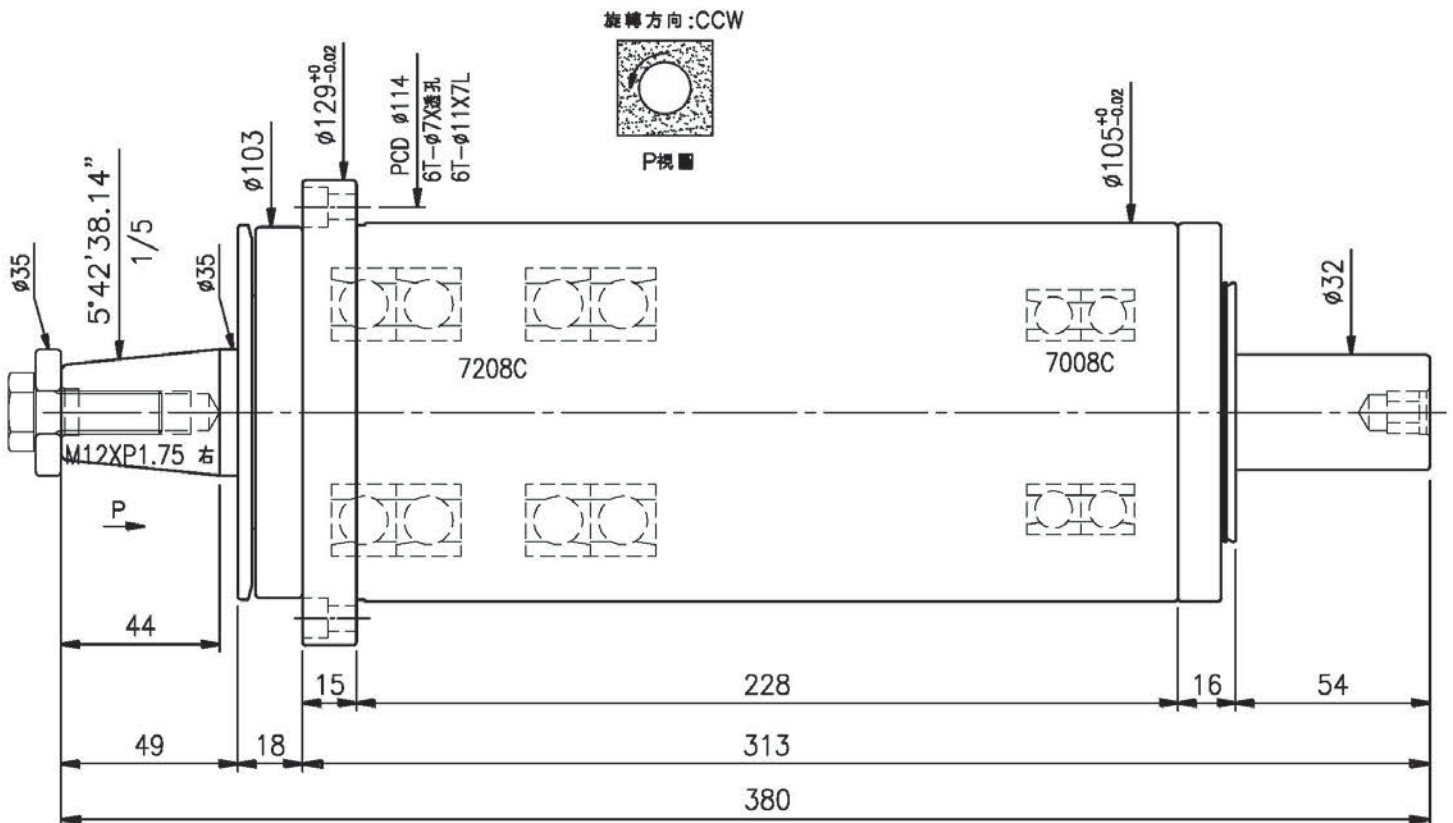
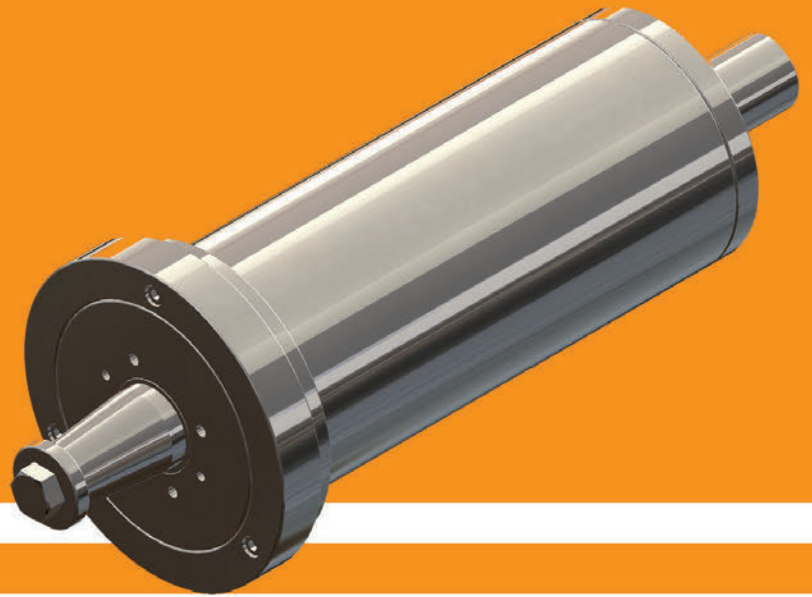
Body Outer Dia (mm)	Max Speed (rpm)	Balance Degree	Lubrication	Working Position
120	2000	G0.4	Grease	Vertical



GV0802

Belt Drive Spindles

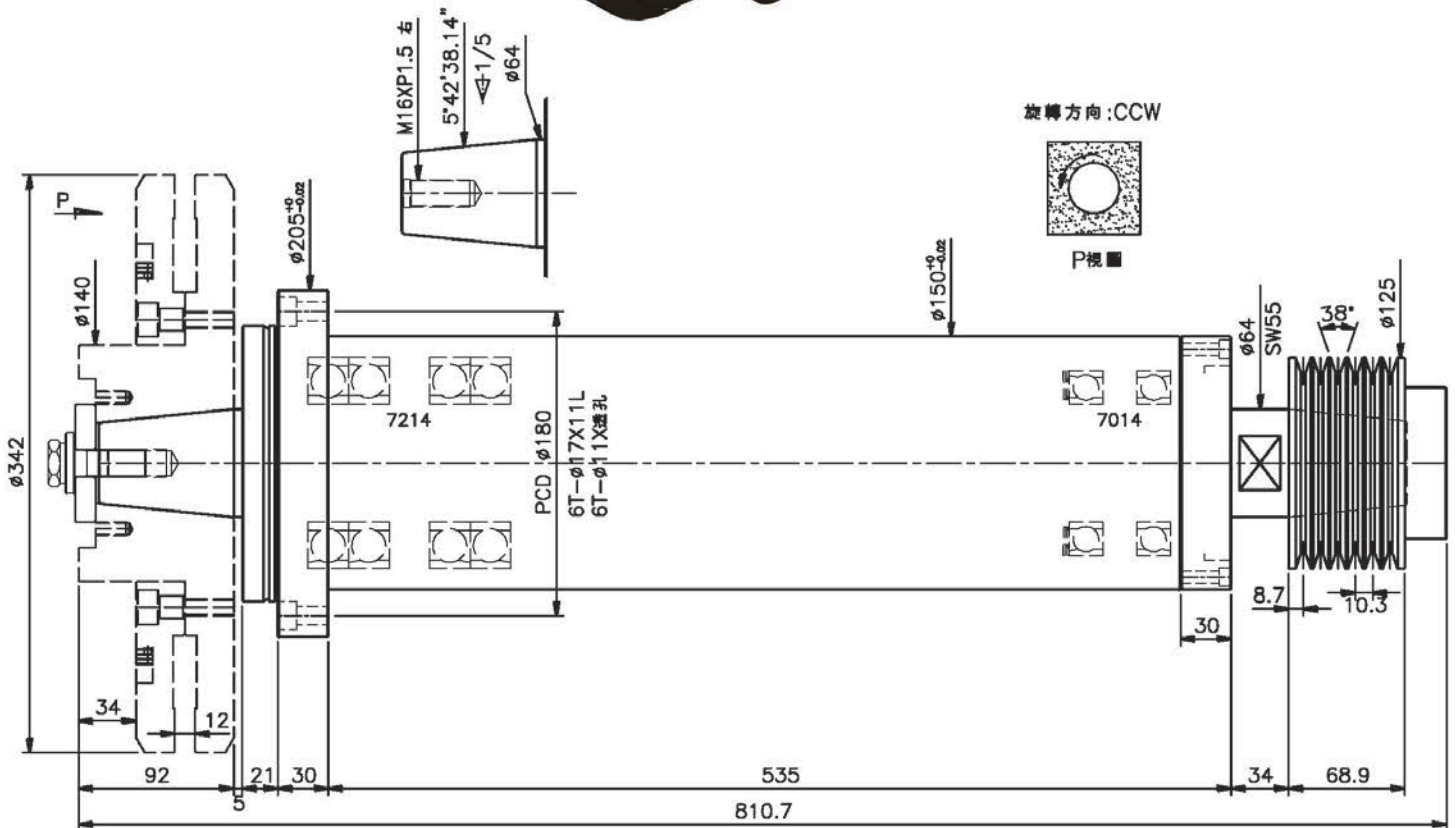
Body Outer Dia (mm)	Max Speed (rpm)	Balance Degree	Lubrication	Working Position
105	2000	G0.4	Grease	Vertical



GH1402R

Belt Drive Spindles

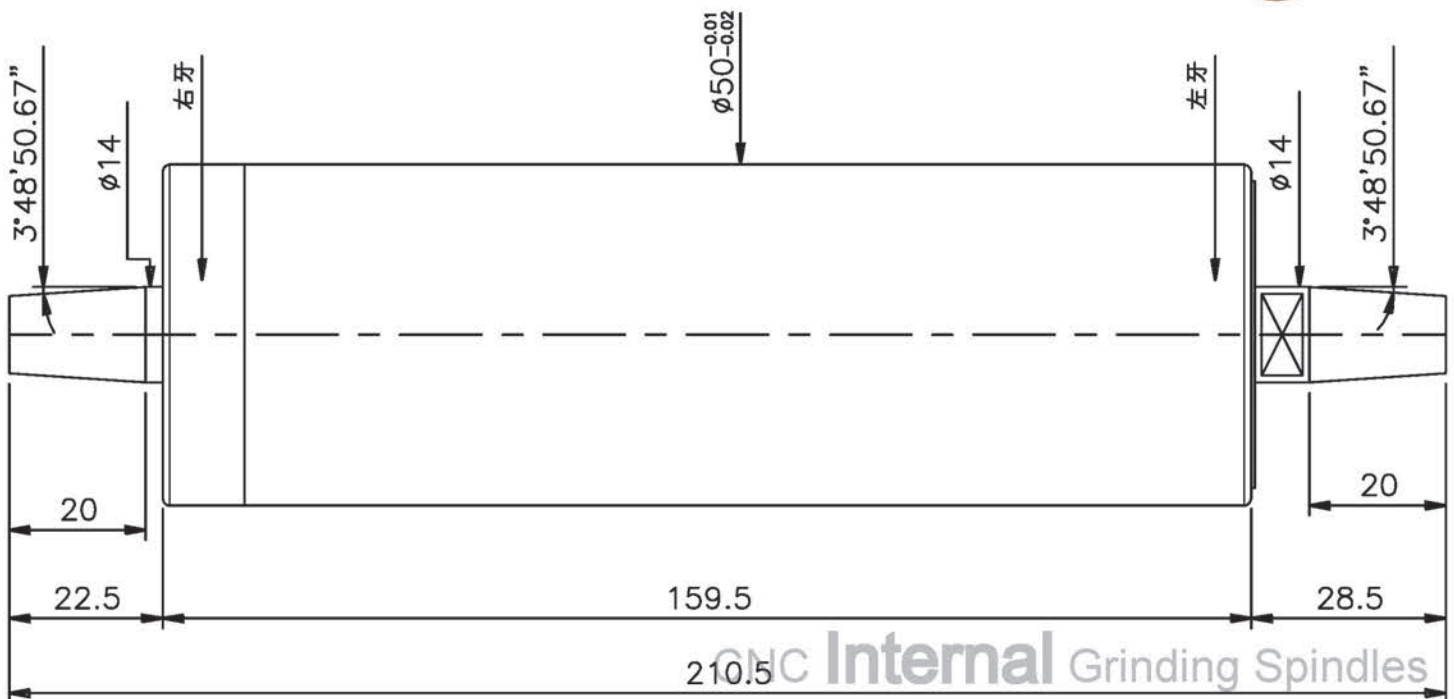
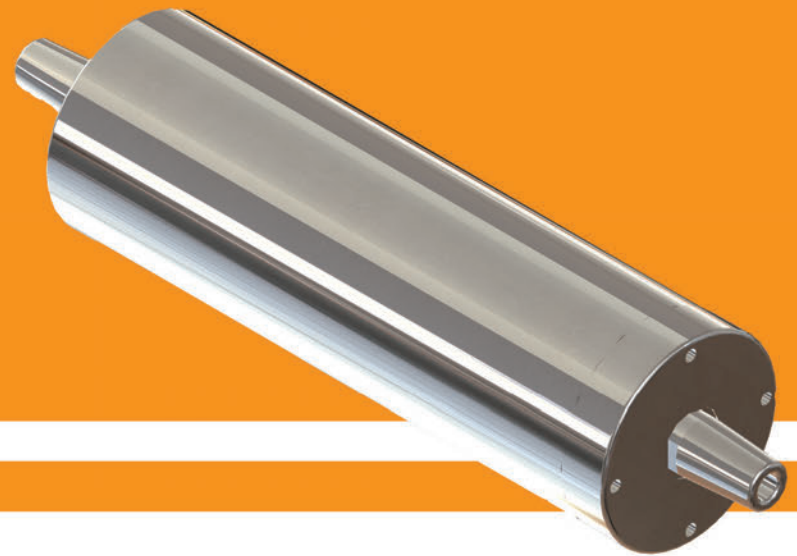
Body Outer Dia (mm)	Max Speed (rpm)	Balance Degree	Lubrication	Working Position
150	2000	G0.4	Grease	Horizontal



PH5035

Belt Drive Spindles

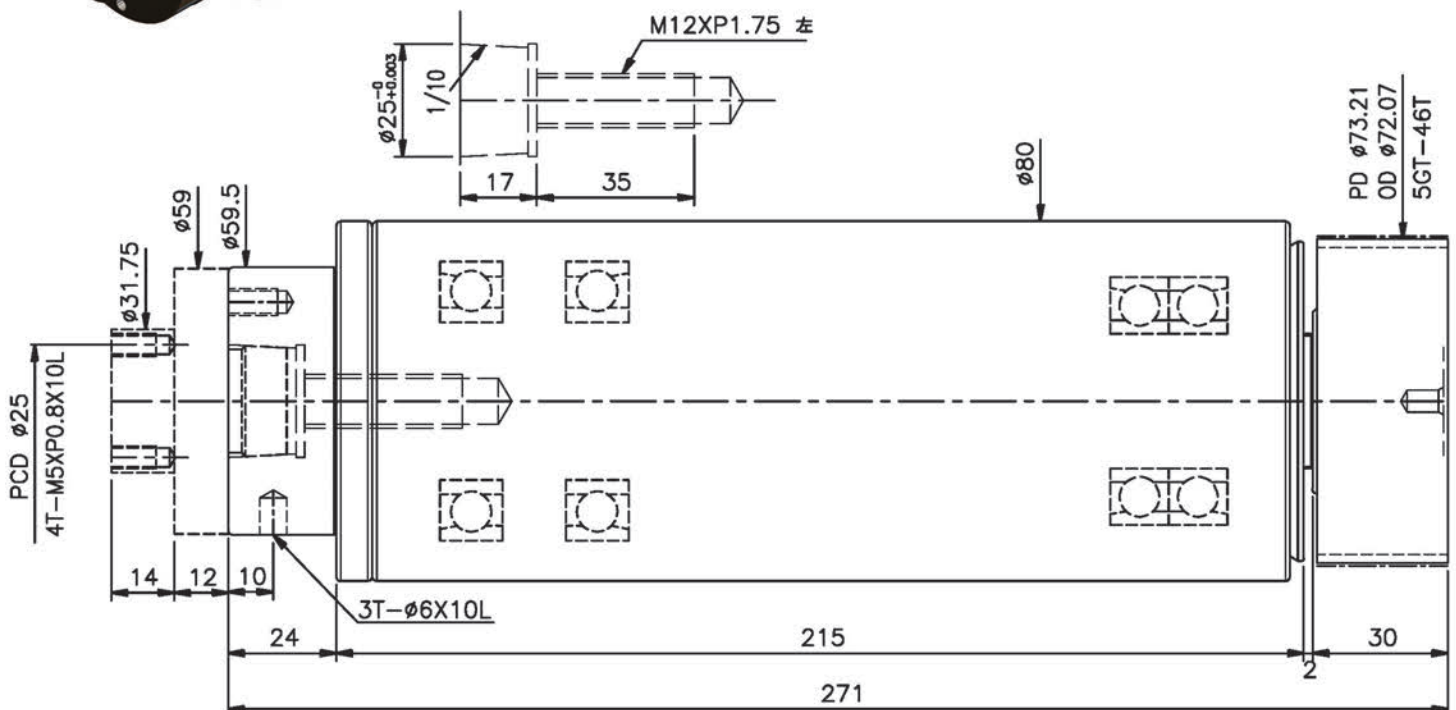
Body Outer Dia (mm)	Max Speed (rpm)	Balance Degree	Lubrication	Working Position
50	3500	G0.4	Grease	Horizontal



GH0703

Belt Drive Spindles

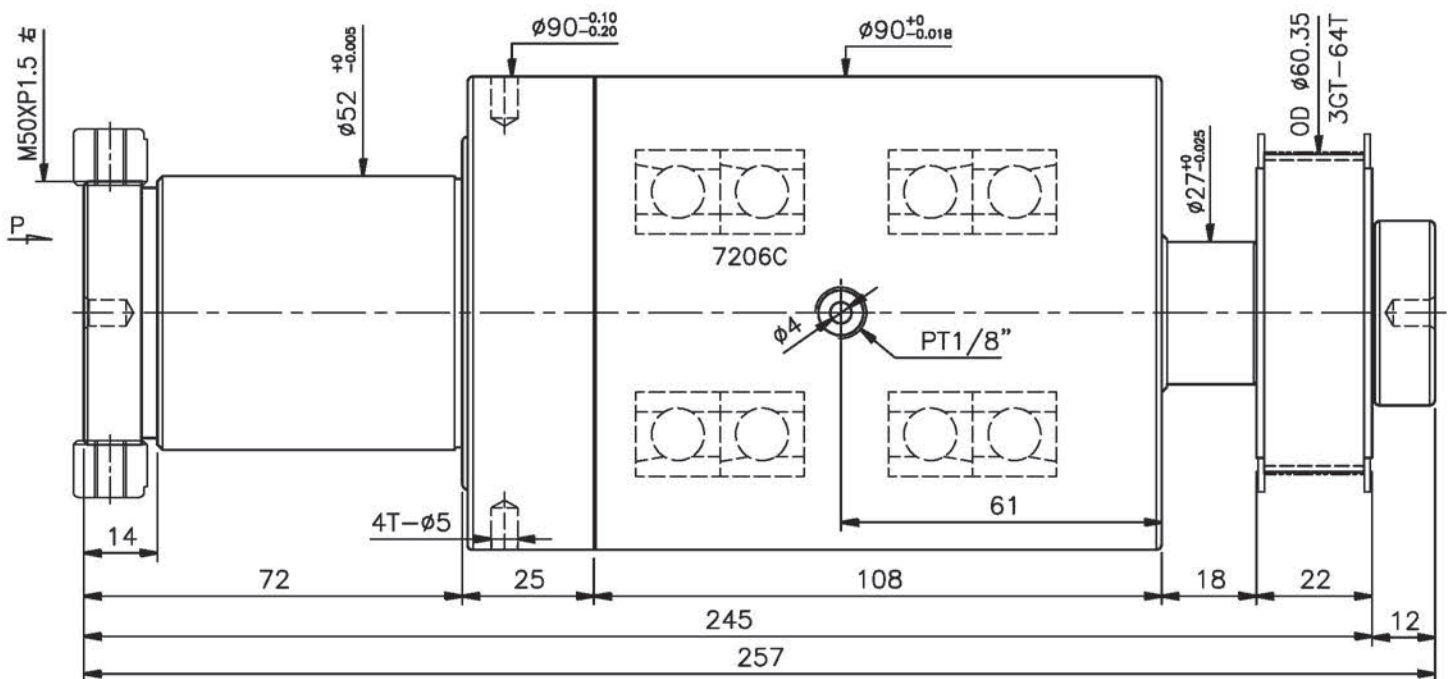
Body Outer Dia (mm)	Max Speed (rpm)	Balance Degree	Lubrication	Working Position
80	3000	G0.4	Grease	Horizontal



GH0602A

Belt Drive Spindles

Body Outer Dia (mm)	Max Speed (rpm)	Balance Degree	Lubrication	Working Position
90	3000	G0.4	Grease	Horizontal



旋轉方向:CCW

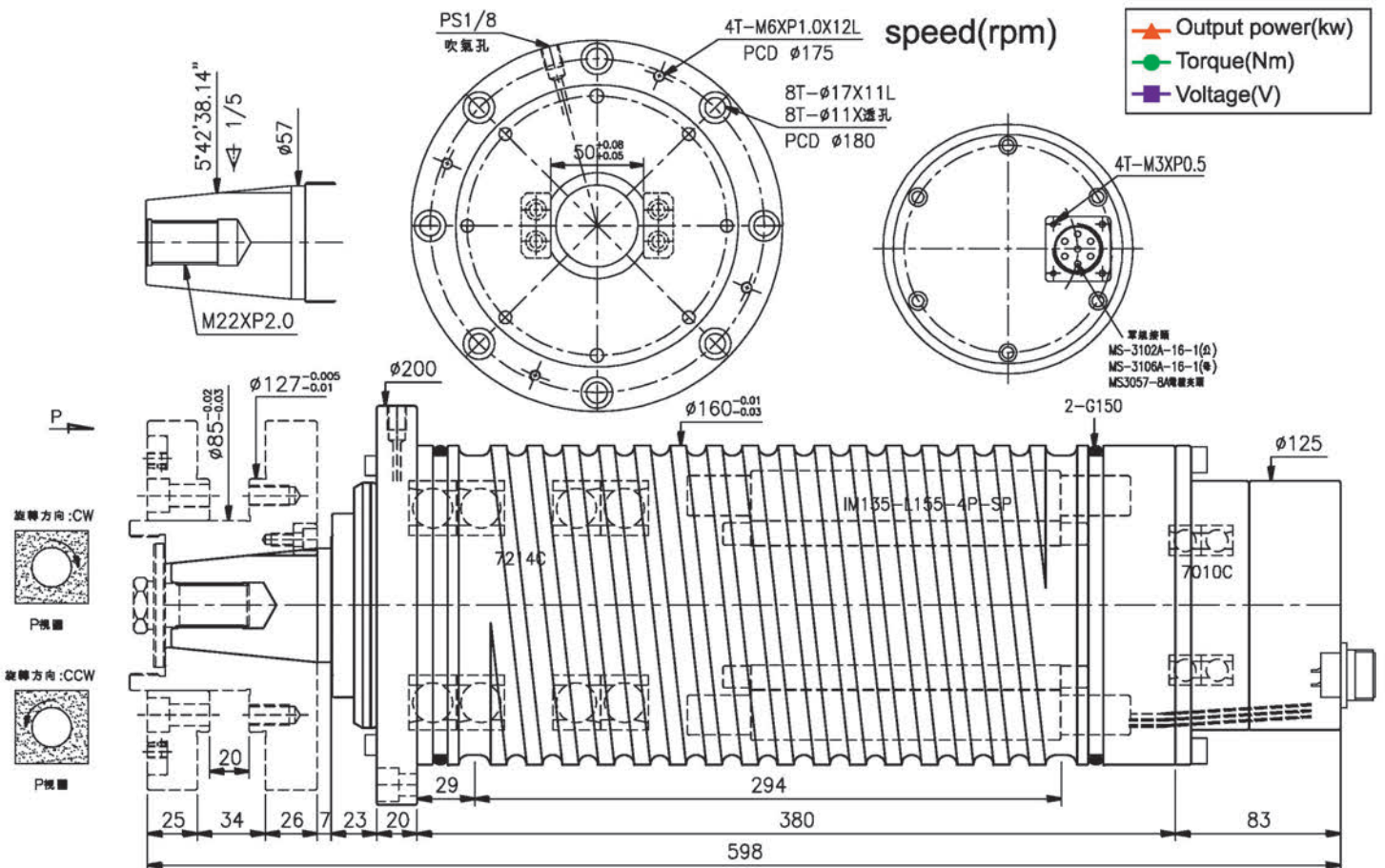
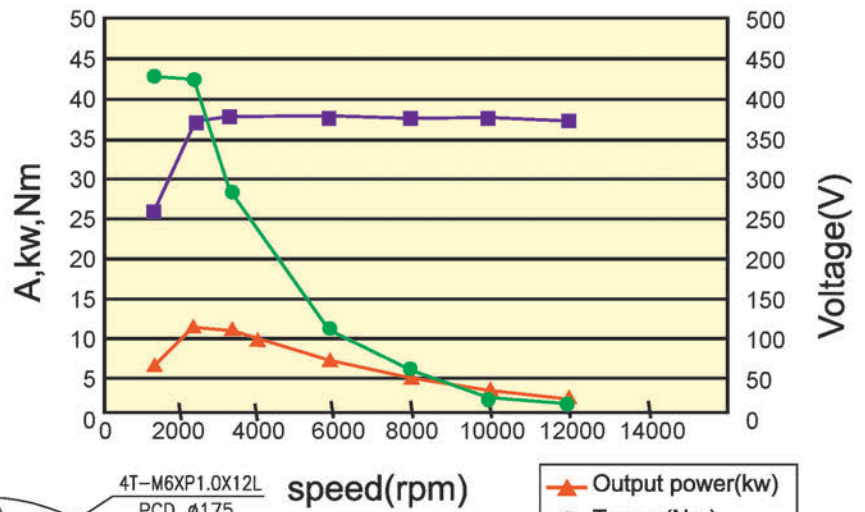
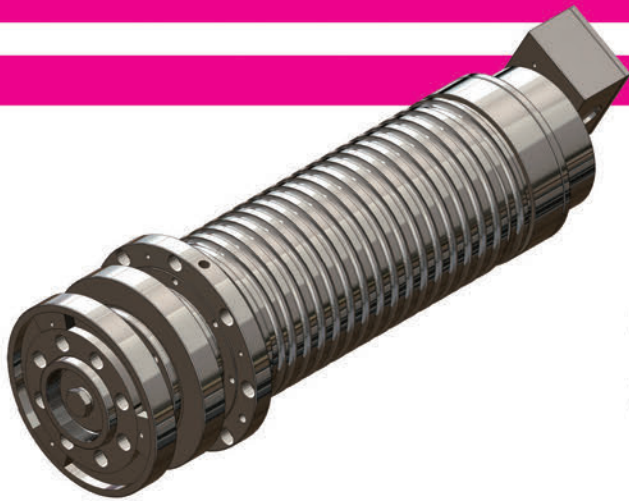


P视图

GVB1406A

Built-in Motor Spindles

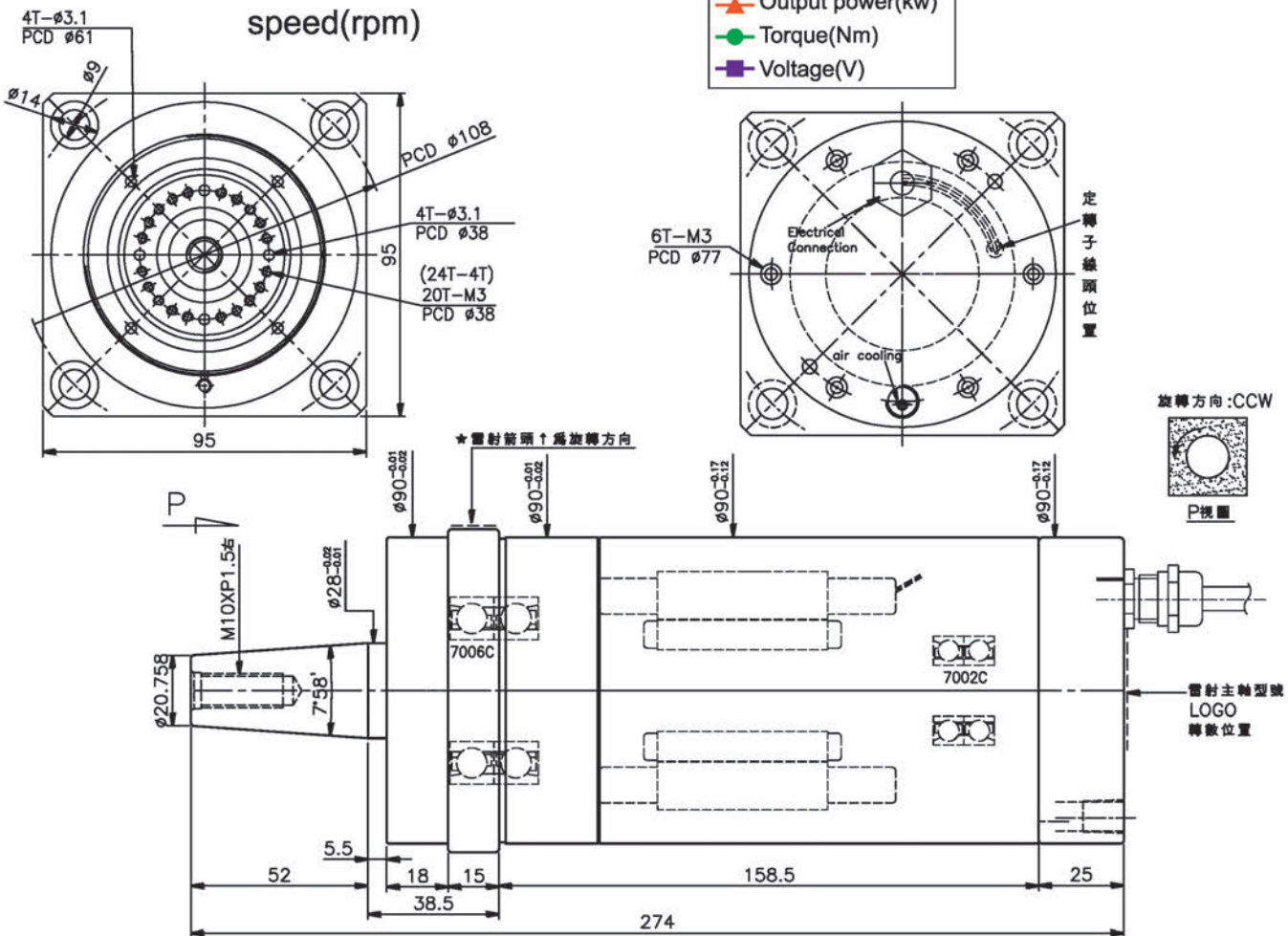
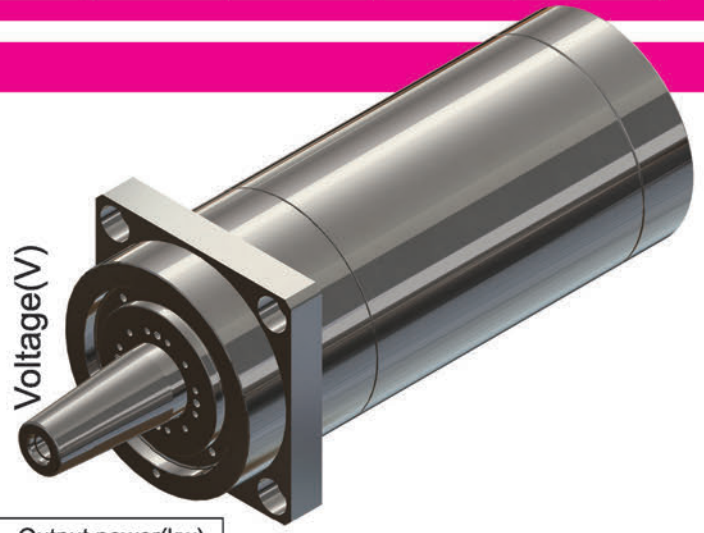
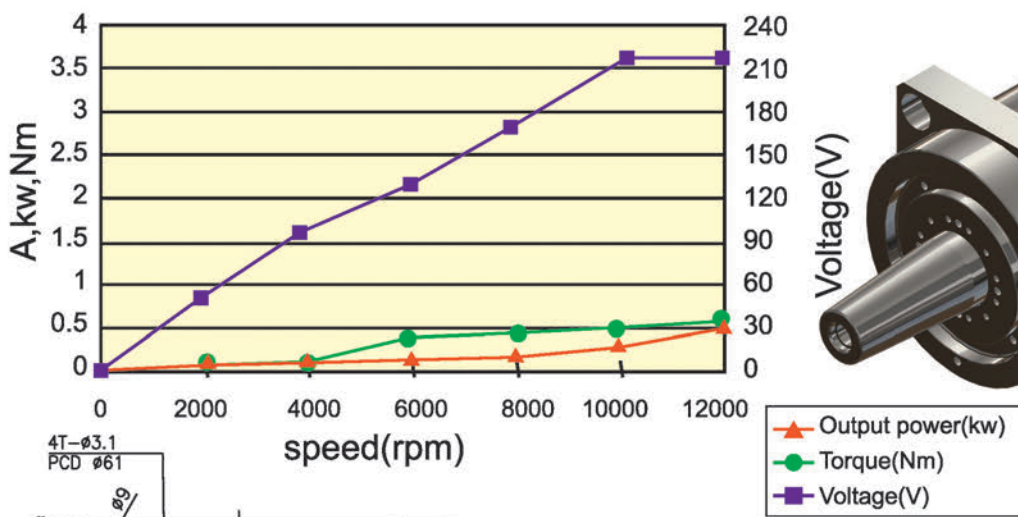
Body Outer Dia (mm)	Max Speed (rpm)	Balance Degree	Lubrication	Working Position	Output Power (kw)	Voltage (V)	Current (A)	Torque (Nm)
160	6000	G0.4	Grease	Horizontal Vertical	11	380	14	11.2



GHB0610A

Built-in Motor Spindles

Body Outer Dia (mm)	Max Speed (rpm)	Balance Degree	Lubrication	Working Position	Output Power (kw)	Voltage (V)	Current (A)	Torque (Nm)
90	8000	G0.4	Grease	Horizontal	0.4	220	3.6	0.4



CNC Grinding



16 E. 7 Rd., Chang Bin Ind. Park, Shian Shi, 50741 Chang Hua, Taiwan.
TEL:+886-4-7910271 FAX:+886-4-7910272
E-mail:kenturn.nanotec@msa.hinet.net
Web:<http://www.kenturn.com.tw>